

Solution for Homework No. 4: Creating and Editing Data

CEEN 4800/6965 - Special Topics
Geographic Information Systems and Hydrologic & Hydraulic Modeling
Dr. Sam Shamsi

1. Complete Exercise 14b (Creating Feature Classes). Submit a screenshot of “New Feature Class” window from Step 10 (shown on page 386).

New Feature Class

Field Name	Data Type
OBJECTID	Object ID
SHAPE	Geometry

Click any field to see its properties.

Field Properties

Alias	SHAPE
Allow NULL values	Yes
Geometry Type	Line
Grid 1	0

Import...

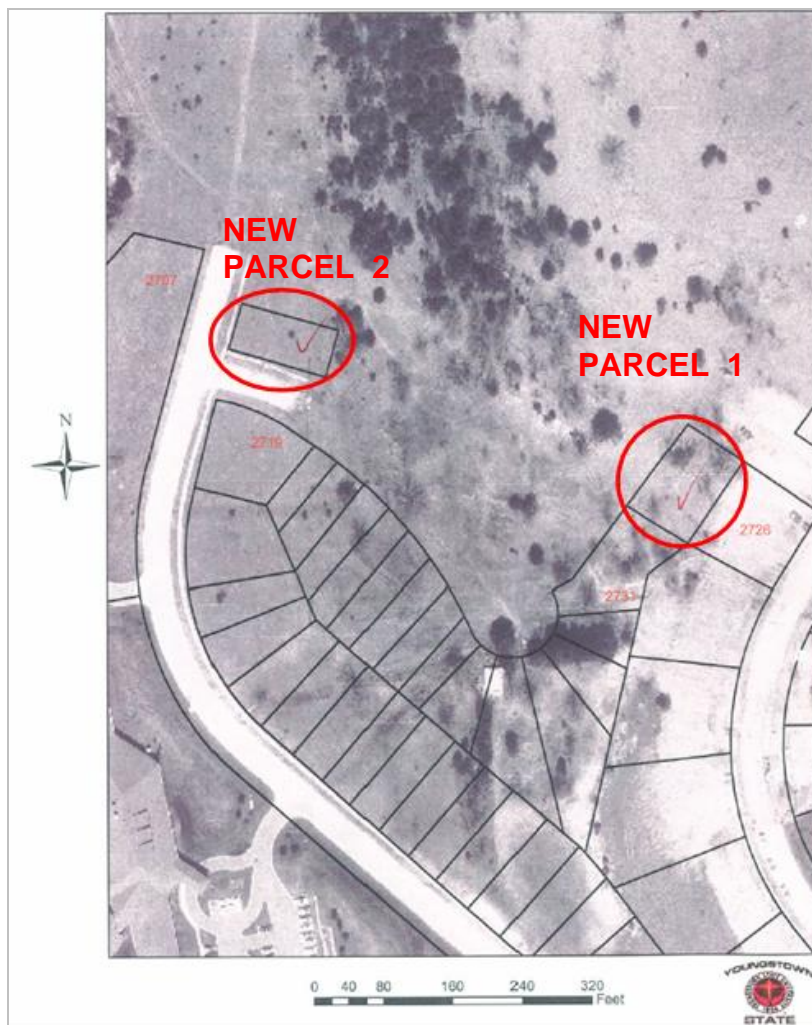
To add a new field, type the name into an empty row in the Field Name column, click in the Data Type column to choose the data type, then edit the Field Properties.

< Back Finish Cancel

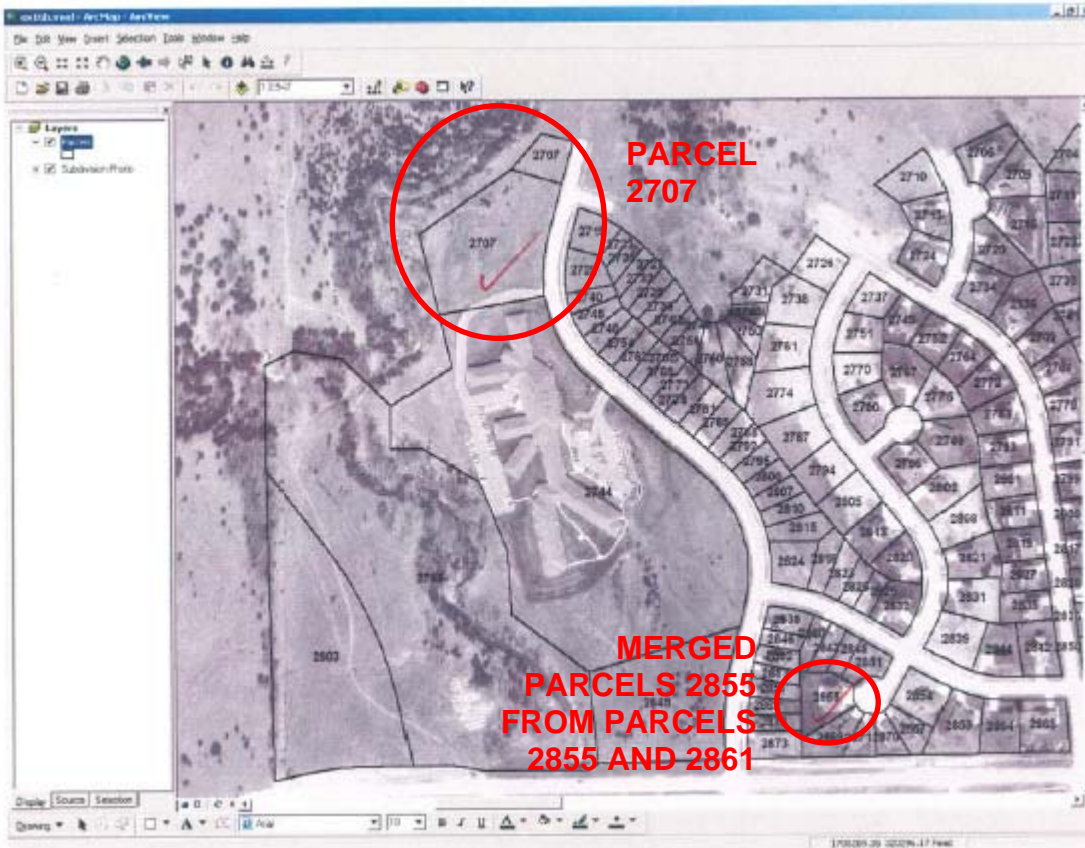
2. Complete Exercise 15b (Using Feature Construction Tools). After completing Step 27, zoom to display the extents of both the newly added parcels. Submit a screenshot of the updated map.

Extra Credit (10 extra points): Instead of submitting a screenshot, print and submit the above map in landscape mode. Add the following elements to this map:

- ▶ Your name
- ▶ A map title
- ▶ North arrow
- ▶ Scale bar, and
- ▶ YSU logo



3. Complete Exercise 16b (Splitting and Merging Features). After completing Step 21, zoom to display the extents of the three edited parcels (2707, 2855, 2861). Submit a screenshot of the updated map.



4. Complete Exercise 16c (Editing Feature Attribute Values). After completing Step 13, repeat Steps 10 to 13 to accomplish the following:
 - ▶ Add a new field to the table called Hectares
 - ▶ Use Field Calculator to populate the Hectares field with parcel area in Hectares (Hint: 1 Hectare = 2.471 acres)
 - ▶ Submit a screenshot of the updated “Attributes of Parcels” table. The screenshot should show all the columns (including the Hectares column) and at least the first 10 rows of the table.

Attributes of Parcels						
OBJECTID	Shape	PARCELS_ID	Shape_Length	Shape_Area	Acres	Hectares
1	Polygon	219	771.272726	34756.355063	0.797896	0.322904
2	Polygon	220	951.705862	37783.615299	0.867392	0.351029
3	Polygon	222	1094.739692	74870.416576	1.71879	0.695584
4	Polygon	221	3841.477939	367909.421562	8.44604	3.41806
5	Polygon	223	953.156376	21397.130913	0.491211	0.19879
6	Polygon	224	575.903911	17960.900181	0.412326	0.166866
7	Polygon	225	714.166729	31394.712774	0.720723	0.291673
8	Polygon	241	1309.803923	96184.958256	2.2081	0.893607
9	Polygon	226	5870.145899	1830162.196088	42.0147	17.0031
10	Polygon	242	1212.419567	81143.275192	1.86279	0.753862
11	Polygon	227	1609.435725	161872.373061	3.71608	1.50388
12	Polygon	228	4787.316607	1295560.559445	29.742	12.0364
13	Polygon	229	834.443157	43448.959096	0.997451	0.403663
14	Polygon	230	822.936920	39433.679496	0.905273	0.366359
15	Polygon	231	833.928864	43393.603469	0.99618	0.403149
16	Polygon	232	713.798071	22765.185326	0.522617	0.2115
17	Polygon	233	690.340839	24849.222640	0.57046	0.230862
18	Polygon	234	825.122561	39633.408508	0.909858	0.368214
19	Polygon	235	964.581180	43713.718902	1.00353	0.406123
20	Polygon	236	605.448748	21964.132771	0.504227	0.204058

Record: 1 0 Show: All Selected Records (0 out of *2000 Selected.) Options